

POLG2 Antibody (C-term)
Purified Rabbit Polyclonal Antibody (Pab)
Catalog # AP2838b**Specification**

POLG2 Antibody (C-term) - Product Information

Application	FC, WB, IHC-P,E
Primary Accession	Q9UHN1
Reactivity	Human
Host	Rabbit
Clonality	Polyclonal
Isotype	Rabbit IgG
Antigen Region	348-376

POLG2 Antibody (C-term) - Additional Information**Gene ID** 11232**Other Names**

DNA polymerase subunit gamma-2, mitochondrial, DNA polymerase gamma accessory 55 kDa subunit, p55, Mitochondrial DNA polymerase accessory subunit, MtPolB, PolG-beta, POLG2, MTPOLB

Target/Specificity

This POLG2 antibody is generated from rabbits immunized with a KLH conjugated synthetic peptide between 348-376 amino acids from the C-terminal region of human POLG2.

Dilution

FC~~1:10~50

WB~~1:1000

IHC-P~~1:50~100

E~~Use at an assay dependent concentration.

Format

Purified polyclonal antibody supplied in PBS with 0.09% (W/V) sodium azide. This antibody is prepared by Saturated Ammonium Sulfate (SAS) precipitation followed by dialysis against PBS.

Storage

Maintain refrigerated at 2-8°C for up to 2 weeks. For long term storage store at -20°C in small aliquots to prevent freeze-thaw cycles.

Precautions

POLG2 Antibody (C-term) is for research use only and not for use in diagnostic or therapeutic procedures.

POLG2 Antibody (C-term) - Protein Information**Name** POLG2 {ECO:0000303|PubMed:30157269, ECO:0000312|HGNC:HGNC:9180}

Function Accessory subunit of DNA polymerase gamma solely responsible for replication of mitochondrial DNA (mtDNA). Acts as an allosteric regulator of the holoenzyme activities. Enhances the polymerase activity and the processivity of POLG by increasing its interactions with the DNA template. Suppresses POLG exonucleolytic proofreading especially toward homopolymeric templates bearing mismatched termini. Binds to single-stranded DNA.

Cellular Location

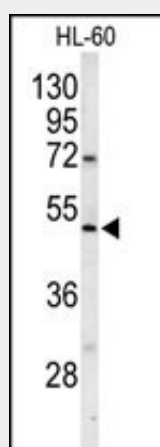
Mitochondrion {ECO:0000250|UniProtKB:P54098}. Mitochondrion matrix, mitochondrion nucleoid {ECO:0000250|UniProtKB:P54098}

POLG2 Antibody (C-term) - Protocols

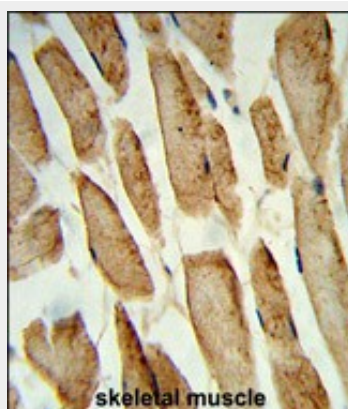
Provided below are standard protocols that you may find useful for product applications.

- [Western Blot](#)
- [Blocking Peptides](#)
- [Dot Blot](#)
- [Immunohistochemistry](#)
- [Immunofluorescence](#)
- [Immunoprecipitation](#)
- [Flow Cytometry](#)
- [Cell Culture](#)

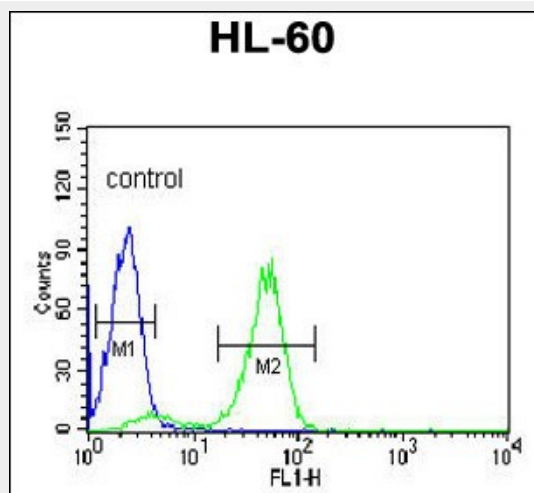
POLG2 Antibody (C-term) - Images



Western blot analysis of POLG2 Antibody (C-term) (Cat. #AP2838b) in HL-60 cell line lysates (35ug/lane). POLG2 (arrow) was detected using the purified Pab.



Formalin-fixed and paraffin-embedded human skeletal muscle reacted with POLG2 Antibody (C-term), which was peroxidase-conjugated to the secondary antibody, followed by DAB staining. This data demonstrates the use of this antibody for immunohistochemistry; clinical relevance has not been evaluated.



POLG2 Antibody (C-term) (Cat. #AP2838b) flow cytometric analysis of HL-60 cells (right histogram) compared to a negative control cell (left histogram). FITC-conjugated goat-anti-rabbit secondary antibodies were used for the analysis.

POLG2 Antibody (C-term) - Background

The accuracy of mitochondrial DNA (mtDNA) replication depends on the coordinated action of many nuclear-encoded proteins and on the correct balance of nucleotides within the mitochondrial matrix. mtDNA is replicated by DNA polymerase gamma, which is composed of a 140-kD catalytic subunit (POLG1) and a 55-kD accessory subunit (POLG2).

POLG2 Antibody (C-term) - References

Longley, M.J., Am. J. Hum. Genet. 78 (6), 1026-1034 (2006)
Carrodeguas, J.A., J. Biol. Chem. 277 (51), 50008-50014 (2002)

POLG2 Antibody (C-term) - Citations

- [The modulation of vascular ATP-sensitive K⁺ channel function via the phosphatidylinositol 3-kinase-Akt pathway activated by phenylephrine.](#)